

"Never doubt that a small group of thoughtful, committed citizens can change the world; indeed it is the only thing that ever has." -Margaret Mead

# PATHWAYS

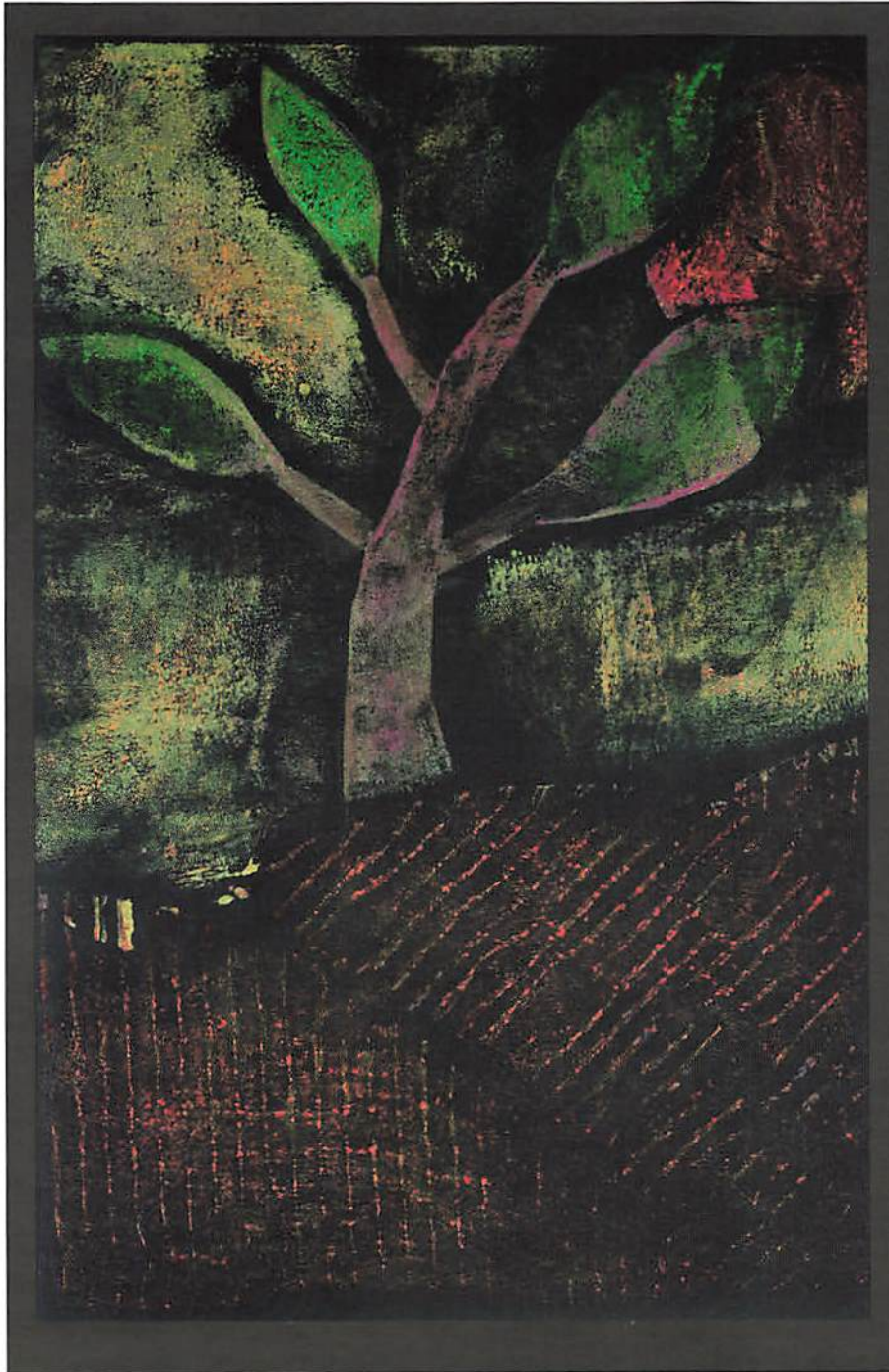
VOL 17 NO 3

THE NEWSLETTER OF THE MENDON FOUNDATION

FALL 2010

A Member of the National Land Trust Alliance

[www.MendonFoundation.com](http://www.MendonFoundation.com)



## Visit the HF-L Art Show at the Mendon Station Festival!

Our cover  
artwork is the  
winning entry  
created by  
7th Grader,  
Nathan Shane.

### Inside:

MENDON STATION FESTIVAL SCHEDULE OF EVENTS • THE CHURCHES OF MENDON • MENDON'S OLDEST HOUSE • 2010 BIRDWALKS • DIGGING MENDON'S BLUEBELLS • STUDENT ARTSHOW WINNERS • AND MORE!





Second Place:  
Katie Hill  
Grade 8

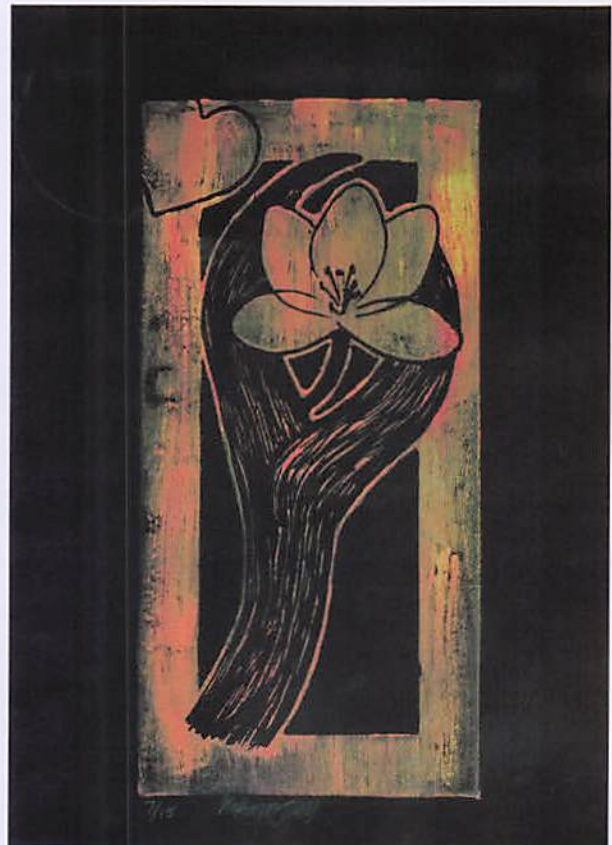
## Student artwork on display!

Visit the HF-L Student Art Show at Mendon Station Festival, September 11 & 12 at Mendon Station Park.

Awards will be presented at the Festival, Saturday September 11 at 3:00 p.m.

**Congratulations to all!**

Raelyn Bovenzi  
Grade 3





# His Majesty's 64th Regiment of Foot Returns to Encamp at the Mendon Festival!



**Editors' note:** If you enjoyed the re-enactment of Revolutionary War history at last year's festival, we think you'll be glad to know that they are back. The group of skilled re-enactors—called His Majesty's 64th Regiment of Foot—is always actively seeking new members in order to bring the public this slice of life. Re-enactments, even the battle scenes, are kid friendly and enjoyable.

Please contact Michael Grenier at [majorlxiv@frontier.net](mailto:majorlxiv@frontier.net) if you are interested in membership. For a more complete story on the group, written by Michael, please visit the Mendon Foundation web site [www.mendonfoundation.com](http://www.mendonfoundation.com) and click on—the Revolutionary War Needs YOU!

At the festival the 64th Regiment of Foot puts many aspects of 18th century living on full view. The two-day encampment is a hands-on demonstration on how people looked, dressed, cooked, and enjoyed life during the time of the Revolutionary War, roughly from 1758 (when it was created) until 1782 when the 64th left the Americas.

The 64th was originally created in 1758 and served in the Caribbean during the French and Indian War. In 1768 it was ordered to Boston.

Unrest in the Colonies was increasing through the early 1770s, culminating in the history-book-making events of April 1775 at Lexington and Concord. It was during those events that the 64th was part of the rescue force to bring the beaten British back to Boston.

In 1776 the 64th participated in the capture of New York. From there in 1777 they campaigned throughout New Jersey and Pennsylvania, taking part in epic battles of Brandywine, Germantown, and Paoli. The regiment formed part of the British rear guard attacked at the Battle of Monmouth by Washington's army while they marched into New York.

The year was 1779 when the 64th became part of the Southern Campaign and in one of the last actions of the war, the Battle of the Combahee River.

After General Cornwallis's surrender at Yorktown in 1781, peace negotiations between the colonists and the mother country began in Paris. The 64th left this country for good (except for its re-enactments in Mendon and other places) for further duty to His Majesty in Jamaica in the West Indies on December of 1782.

Attorney Advertising

**Karen Schaefer**

Honeoye Falls Resident

**LACY KATZEN LLP**  
PROVEN EXPERIENCE · PERSONAL ATTENTION

Attorneys at Law

*Serving you in several regional offices and at:*

130 East Main Street  
Rochester, NY 14604

For an appointment, call:  
585.454.5650  
1.800.676.5576

*For more information regarding our firm and available services, visit us on the web at:*

[www.lacykatzen.com](http://www.lacykatzen.com)

or

*contact us by email at:*  
[kschaefer@lacykatzen.com](mailto:kschaefer@lacykatzen.com)

**MENDON**



**PHARMACY**

51 ASSEMBLY DRIVE  
MENDON, NY 14506

**WE CARRY A FULL LINE  
OF MEDICAL SUPPLIES**

**ACROSS THE HALL FROM  
THE MENDON MEADOWS MARKET  
MON-FRI 9:30-7PM SAT 9:30-2PM  
SUN CLOSED**

**PH. 585-624-8010 FX 585-624-8019**



# MENDON'S OLDEST HOUSE

By Diane C. Ham,  
Mendon Town Historian

Do you know where the oldest house in the Town of Mendon is located? Unfortunately, probably no one living now knows for sure. We know that the first homes in Mendon were log cabins built by our early settlers who came here from the eastern states; however, log cabins were meant to be temporary homes until a larger house could be built.

Surprisingly enough, according to the 1855 Census of New York for Mendon there were still 17 log cabins in existence here. Obviously not everyone could afford to have a larger, finer house at that time. A "frame" house could only be built after Mendon had sawmills. The first sawmills that we know of were built about 1800-1810 in the hamlet of Mendon, as well as on Bull Sawmill Rd., and in the village of Honeoye Falls.

One of the ways we can tell the approximate age of the house is by its architectural style. The Federal (or Adam) was the dominant style in the US from about 1780 to 1820. During this period, the population grew from three million to about ten million and covered the area from the Atlantic seaboard through New York and into Ohio. The simple, center-chimney colonial style house (Federal) is one of the first architectural styles in the Genesee Country, including Mendon. An example of this style is found at 186 Plains Road. This house was built by Abner Sheldon fairly soon after he came to Mendon from Vermont. He came here with his family



in 1808 and purchased 200 acres on the east side of Plains Road. He probably lived in a log cabin before he built the house about 1815. The house has probably not changed much since it was built except for the enclosed porch addition in the 1980's on the south side of the house. Other additions, of course, were electricity, running water, and a bathroom.



Another early house in Mendon is the cut-limestone house on Route 15A located between Five Points Road and Honeoye Falls #6 Road on the west side of the road. It is an early 19th century two-story frame house probably built around 1812-1815. It could have been built easily before we had sawmills. The north and south stone end walls originally had parapets which are formed where the stepped gables extend up beyond the roof edge. A few years ago, the gable ends were rebuilt and the double interior end chimneys were no longer used. The limestone for

this house was quarried from the banks of Honeoye Creek behind the house. The style of this house is also Federal, but does not have a center chimney.



Still another early house that was built circa 1810 but probably looked much different than it does today, is an Italianate house located at 639 Boughton Hill Road. It was probably built by John Park soon after he received the land in his brother, Benjamin's will. One of the clues we have that this house was actually built much earlier than it appears now is that the floor beams are full logs under part of the house; some are hand hewn. In this part of the country, floor beams that consisted of logs with bark were usually not found here after 1825. The construction of this house was post-and-beam—also an indication of a very early house. The house was probably rebuilt about 1862 after it was sold by the executors of John Park to John DeLacy.





Taylor Road has several early houses. Perhaps the earliest one is a frame house located at 149 Taylor Road. It is a Greek Revival style, one-and-a-half story post-and-beam house. It has side gables with a low-pitched roof. The breezeway and garage on the west side are modern. This house was built about 1815 by Amherst Hastings and was sold to Dr. John Browning in 1818 or 1819. Dr. Browning came to Mendon with his family from Massachusetts. Betsy, his wife, wrote a letter to her sister back home soon after they moved into their house. There is a copy of it in the Honeoye Falls/Mendon

Historical Society Museum. She wrote: "We have got a very convenient house although small. We have one room finished; it stands on the pleasantest place of any house in the village."

Mendon has many homes that were built soon after these first examples. The Mendon Historic Preservation Commission has been encouraging current owners of these homes to add them to the local register of historic places. This will ensure that future home owners will continue to care for these historic homes as they have been cared for in the past.



THE RABBIT ROOM  
COME CELEBRATE

HOST YOUR  
NEXT CELEBRATION  
IN A UNIQUE HISTORIC  
GATHERING PLACE WITH  
GREAT FOOD & THREE  
FLOORS OF ART

LUNCH: 11:30 AM-2 PM Thurs-Sat  
DINNER: 5:30 PM-9 PM Thursday  
Reservations are recommended.  
Catering service available.

THE LOWER MILL  
RESTAURANT & GALLERIES

582-1830 | HONEOYE FALLS  
WWW.THELOWERMILL.COM



Visit us at [www.parkavebike.com](http://www.parkavebike.com)

IS PROUD TO SUPPORT  
THE MENDON FOUNDATION  
& THE LEHIGH VALLEY TRAIL

**Pittsford**  
2900 Monroe Ave  
Rochester, NY 14618  
(585) 381-3080

**Henrietta**  
600 Jay Scutti Blvd  
Rochester, NY 14623  
(585) 427-2110

**Victor** **NEW**  
8049 Route 96  
Rochester, NY 14564  
(585) 425-1501



**The biggest and best  
selection of bird feeders,  
bird houses and hardware  
in Western New York.**



*Nature and Garden Store*  
3035 Monroe Ave  
Rochester, NY 14618  
(585) 264-1550  
<http://thebirdhouseny.com>

**Gardening tools and  
accessories, fountains, bird  
baths, benches, statuary,  
wind chimes and more!**

**Riley  
Nichols &  
Munn**

**Stephen B. Riley  
Principal  
100 Linden Oaks Ste 101  
Rochester, NY 14625**

(585) 419-6860  
(866) 616-6379  
[steve.riley@lpl.com](mailto:steve.riley@lpl.com)  
[www.rileynicholsmunn.com](http://www.rileynicholsmunn.com)

Securities offered through  
LPL Financial  
Member FINRA/SIPC

# 2010 Mendon Foundation Birdwalks



The fifth annual series of bird walks were held on five consecutive Saturday mornings beginning April 24th. We began with the Lehigh Valley Trail at Rochester Junction, as we have in past years and headed west for a mile or so before returning to our starting point. After stopping for a little breakfast at the former depot site a small group of birders decided they weren't quite done yet and ventured out to Great Bend Park via the connecting trail. The following week found a hardy bunch of birders heading off to Taylor Marsh in Honeoye. This marsh is part of the Bergen Swamp Society wetlands.

Although a wide variety of waterbirds were seen or heard, the Sandhill Crane, known to frequent that area, eluded us that day. Breakfast followed at the popular Red Coyote restaurant in Honeoye. Our third walk was held at the Mendon Foundation property on Mendon Center Road. This was to be our only rainy outing, but we managed to observe 30 species before the wind forced us to abandon our walk and head to Sacred Grounds in Mendon for breakfast. The Burroughs Audubon Society at Railroad Mills in Victor graciously allowed us to use their clubhouse for breakfast and enjoy

their trails for our fourth outing. Some of us stayed for a presentation of Bird Language that was offered by the society. The highlight of this walk was seeing a lichen-covered Blue Gray Gnatcatcher nest being tended by its owner.

Our final walk was at the Semmel Road Park and included varied terrain – woods, open fields and wetlands. As always on our final walk, breakfast was enjoyed afterwards at Stewart Ackerman's house. During most of our outings 30 - 40 species of birds were identified with 56 cumulative species being recorded. Other informal bird walks continued through out the summer at a variety of locations such as Oak Openings in Rush, Boughton Park in Bloomfield, Fishers Park, Blue Bird Haven in Victor and a small group attended a series of Warbler classes led by naturalist Doug Bassett at Letchworth Park.

For more information or to be added to the email contact list, please email Jaye Chambery at [jaye81@hotmail.com](mailto:jaye81@hotmail.com) or call Connie Kellogg at 624-4797. Be sure to keep your binoculars focused on next year's April edition of Pathways for the 2011 series of walks.



# Mendon Station Festival

**FUN FOR ALL AGES**

**2010**

**Saturday, September 11 - Sunday, September 12**



Gold Sponsors

*Westminster*  
Hall & Chapel

**Carosa  
Stanton**  
Asset Management, LLC

The Mendon Station Festival is presented by the Mendon Foundation and benefits the Lehigh Valley Trail.



Professional Hair Care  
Nail & Skin Care  
Massage



VICTORIA'S  
GALLERY  
SALON

LADIES  
GENTLEMEN  
CHILDREN

20 Assembly Drive  
Mendon, NY 14506  
**585-624-5170**  
[www.victoriasgallerysalon.com](http://www.victoriasgallerysalon.com)

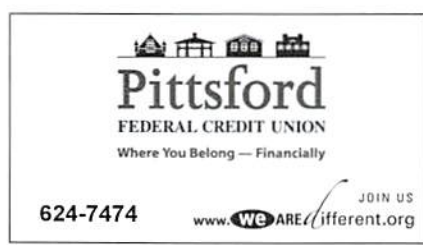


**Silver Sponsors**



*A boutique investment firm  
in Honeoye Falls*

(585) 469-5199  
[www.armbrustercapital.com](http://www.armbrustercapital.com)



**Mendon Village Commons**  
1350 Pittsford-Mendon Rd.  
585-509-1350



# 2010 MENDON STATION FESTIVAL

**SATURDAY, SEPTEMBER 11 - SUNDAY, SEPTEMBER 12**

★ New This Year

## **12 PM - 5 PM**

- Artists & Craft Vendors
- ★A TASTE OF MENDON (at the Food Court 12:00 - 7:00 PM)
- HFL Student Art Show (at Cibi's Deliziosi)
- Scouting Encampment (Mendon Troop 105 & West Bloomfield Troop 159)
- HF-L Robotics Games
- Mendon Historical Exhibit (with Town & Village Historians - Diane Ham & Lynne Menz)
- ★NYS SMOKE HOUSE (Safely experience a fire and learn how to survive.)
- Mendon Fire Department Display
- SILENT AUCTION (at Mendon Foundation Tent)
- ★Wine and Custom BrewCrafters Sampling (at A Taste of Mendon, 21 & older only)
- Pre-Revolutionary British Encampment & Demonstrations
- ★Honeoye Falls-Mendon Ambulance Display
- ★Trout Brook Farm's Alpaca Petting Zoo
- Pony Rides
- Inflatable - Triple Fun Combo (12:30 - 4:30 PM)
- Horse Drawn Wagon Rides (take a trip down the Lehigh Valley Trail) (12:30-4:30 PM)

## **SPECIAL EVENTS (and Location)**

### **SATURDAY, SEPTEMBER 11**

- ★12:00 - 12:15 PM 9/11 Memorial Service with Taps (Stage)
- 1:00 - 1:30 PM Bristol Valley Mounted Drill Team (Arena)
- 1:30 - 2:00 PM 64<sup>th</sup> Regiment of Foot - British Colonial Field Demonstration (Arena)
- ★ 2:00 - 3:00 PM Pittsford Firemen's Band (march in from Rt. 64 to Stage)
- 3:00 - 3:30 PM Harnessing and Driving Exhibition (Arena)
- 3:00 - 4:00 PM The Bob Squad (Stage)
- 4:00 - 4:30 PM 64<sup>th</sup> Regiment of Foot - British Colonial Field Demonstration (Arena)
- ★ 4:30 - 5:00 PM 18<sup>th</sup> Century Children's Games (Arena)
- 4:00 - 5:00 PM Gabe Condon Quartet (Stage)
- ★ 5:00 - 7:00 PM Music of Shawn Welch (at the Food Court)
- ★ 7:00 - Til PM Mendon Church Choir with tribute to 9/11 - Benefiting Benincasa  
(at Westminster Hall adjacent to festival grounds)

### **SUNDAY, SEPTEMBER 12**

- ★12:00 - 1:00 PM Night Shift (Stage)
- 12:30 - 1:00 PM 64<sup>th</sup> Regiment of Foot - British Colonial Field Demonstration (Arena)
- 1:00 - 1:30 PM Horse Event - Mendon Pony Club Riding Demonstration (Arena)
- ★ 1:00 - 3:00 PM Black Diamond Express (amble in to Stage)
- 3:00 - 3:30 PM Student Art Show Awards (Stage)
- 3:30 - 4:00 PM 64<sup>th</sup> Regiment of Foot - British Colonial Field Demonstration (Arena)
- ★ 4:00 - 4:30 PM 18<sup>th</sup> Century Children's Games (Arena)
- 3:30 - 4:30 PM Boughton Hill Band (Stage)

Free Admission and Parking, plus Handicap Accessible Rest Room Facilities.  
Mendon Station Park is located between Routes 64 and 251 in the Hamlet of Mendon

For more Information call 624-3182 or 738-5405  
Program Scheduling is Subject to Change With out Notice



## Carosa Stanton

Asset Management, LLC



### Mendon's Money Manager

Have you:

- Ever changed jobs?
- Been laid off?
- Retired?

Christopher Carosa, CFA

Discover the 3 most important steps you must take *right now* to protect your retirement assets.

Call for an appointment today at our new offices in the heart of the Hamlet

3909 Rush Mendon Road  
(585) 624-3150

- or -

e-mail: ccarosa@bullfinchfund.com

*The Next Generation  
In Investment Management*



(above) The 64th Regiment of Foot encampment attracts festival goers interested in Colonial American Life.

(right) Pony rides are always popular with the younger set. This year there will be four ponies available from 12 to 5 PM each day.




# Pittsford

FEDERAL CREDIT UNION

*Helping members  
get ahead - financially -  
for more than 40 years*



www. **we** are *different*.org

Pittsford • Mendon • Perinton  
Victor • Brighton • East Rochester  
Henrietta • East and West Bloomfield  
Lima • Honeoye Falls • Avon • Rush

## Bronze Sponsors

A Touch of Gold  
Bridges of Mendon  
Camp Good Days & Specials Times  
Canandaigua National Bank and Trust  
CMS Consulting Group  
Hair & The Hound  
L & B Worldwide  
Mendon Child Care Center  
Mendon Collision

Mendon Dental Center  
Mendon Pediatrics  
Mendon Pet Supply  
Mendon Village Animal Hospital  
Pittsford-Mendon Physical Therapy  
Saxby Implement Corporation  
Ted Collins Tree & Landscape  
Victoria's Gallery Salon



# Senior Living That's Just Like Home.



There comes a time in our lives when the upkeep on a home and yard is simply too much. Sometimes health issues also become a concern. That's why Dick Crossed created Pinehurst way back in 1991 for couples and single people (62 and older) who wanted to get on with their lives and to enjoy their comfortable lifestyle with others.

Managed by Conifer Realty, Inc., Pinehurst is located in the historic Village of Honeoye Falls within a walking distance to many stores. The Pinehurst van is always traveling with residents on board to doctor's appointments, shopping, church services, and other lively destinations.

One of the first of its kind as a designated senior living community, Pinehurst offers comfortable and safe housing backed by peace of mind, security, and socialization that many area people were looking for in their lives. The meals at Pinehurst approximate fine dining. Lively conversation, great food, and an inviting atmosphere make meal times something to look forward to.

Pinehurst is an expertly designed, 68 unit facility with one and two bedroom apartments. Each apartment has a patio or balcony. Residents enjoy easy country living with many amenities. Household chores such as cleaning, cooking, and lawn care are things of the past.

Social opportunities for our guests include tours of local historical sites, lectures, lunches at local eateries, concerts, and shopping. Residents have cruised on the Genesee River, celebrated a Senior Snow Ball with area high school students, and promoted fund raisers for area charities and servicemen and woman.

Most Pinehurst residents have local ties to the area, and many have enjoyed the trails and parks the Mendon Foundation supports. We have recently dedicated a portion of our property to become naturalized. It really is a beautiful setting. "I love to look out my window and see deer right in my backyard," says Bette Ryan, Pinehurst resident.

To learn more about Pinehurst, call 624-5970 to set up a visit. We would love to show you around our community.



Pittsford Mendon  
Physical Therapy  
**Erin Nielsen, P.T, C.P.I.**  
**John Shuman, M.S., P.T., A.T.C.**  
20 Assembly Drive Suite 101  
Mendon, NY 14506  
(585) 582-1330

Honeoye Falls-Lima  
Physical Therapy  
**David Monsees, M.S., P.T.**  
58 North Main Street  
Honeoye Falls, NY 14472  
(585) 582-0034

Lattimore Rush Henrietta  
Physical Therapy  
**Karen Shufelt, DPT**  
20 Finn Road Suite A  
Henrietta, NY 14467  
(585) 444-0040

**The sign of a company with  
your best interest in mind.**



If you're serious about protecting your family, your assets, or your business, give us a call or come-on in. We'll lay out your choices and recommend the coverages that fit your needs and wallet.

**624-2180**

**19 W. Main Street, Honeoye Falls**

**Home Auto Business Farm**



10th  
Anniversary  
in  
Honeoye Falls





# Many footprints on the path towards God.

By David Smith, Pastor,  
and Carol Urbanic, church historian

The year was 1809. James Madison had just succeeded Thomas Jefferson as President, and there were only 15 United States. Western New York was just beginning to be settled a generation after the War of Independence. Some of Mendon's first settlers were Revolutionary War veterans who admired the rolling hills, dense forests and fertile, well watered land. Imagine Mendon as a frontier town, with Indian trails winding through heavily wooded areas. There would have been a few homesteads with land cleared for farming, and the nearest settlements were at least a half day's journey on horseback. It was to this setting that some transplanted New Englanders came to build new lives.

The story of Mendon Church begins in 1809, when a common life of worship, singing, prayer and Bible preaching began to be shared by a handful of settlers. They first worshipped in log cabins with itinerant missionaries ministering to their spiritual needs. This led to the establishment of the First Congregational Society of Mendon on January 5, 1816, when 7 people met [on the site of] the home of Ezra and Eunice Sheldon, the cobblestone house at 21 Mendon Ionia Road. On July 2, 1823, the congregation made a denominational change, being received under the care of the Presbytery of Rochester as the First Presbyterian Church of Mendon.

In January 1819, subscriptions for a Meeting House were authorized; the cornerstone laid July 13, 1825; and the Meeting House dedicated June 26, 1827. The site was on Rush Mendon Rd. about a mile and a half west of the four corners of the Mendon hamlet. In 1839 the church building was moved



*The Mendon Church began in 1809. This led to the establishment of the First Congregational Society of Mendon on January 5, 1816 when seven people met at the home of Ezra and Eunice Sheldon, 21 Mendon Ionia Road in this lovely cobblestone still standing.*



*Westminster Hall, as it is now known, is an elegant red brick, neo-Gothic building, 3886 Rush Mendon Road. It was dedicated in 1900. Lacking space the church built an addition in 1954.*

from that site to a location in the hamlet where it stands today (imagine bringing a building that size down Route 251 in 1839). Supporting a minister in those early days was no problem – the minister was paid  $\frac{1}{4}$  in cash and  $\frac{3}{4}$  in produce. In periods of economic depression, they hired a minister for as many Sundays as funds would permit. Elders and teachers took over the balance of the Sundays. In the early 1900's, the 1827 building was sold to a farmer's organization to be the Mendon Grange; subsequently it became a playhouse, an auction house and then a restaurant.

In 1839, monies were subscribed to erect a "Parsonage House," the home at 3880 Rush Mendon Rd. That house is now the Benincasa home for the terminally ill. In 1888, a portion of the

church property was sold to the Lehigh Valley Railroad and, for many years, a sidewalk went through the church property to the Mendon depot to accommodate railroad passengers. In January, 1899, the congregation decided to build a new house of worship. One year later, the beautiful, red brick, neo-Gothic structure at 3886 Rush Mendon Rd. was dedicated, situated beside the old 1827 building. Such an ornate, substantial, brick church house was highly unusual in a rural, farming community of 1900. Most rural church buildings of the period were simple, white clapboard. Yet the structure built in Mendon featured elegant stained glass windows, chestnut and oak woodwork and carvings, and a 4-rank pipe organ (hand-pumped until the building was electrified in 1916). In 1954 Westminster Hall, an education and





*The 1827 meeting house in a 1918 photograph. Everybody knows Cibi's but how many people realize that the building was once part of the Mendon Church's history? Built in 1825, the building was moved to its present location in 1839. In the early 1900s, the building was sold to the Mendon Grange, and then it became a play-house, a place for auctions, and now a catering and cooking school.*



*Benincasa, 3880 Rush Mendon Rd., is now dedicated to quality care for end of life patients and their families. It was erected in 1839 as the Parsonage House for the church.*



*In spring of 2005, the congregation gathered to dedicate today's Mendon Church, located on Cheese Factory Road on a 24 acre site. The church, following a long history in Mendon, continues to serve seekers with the same spirit members exhibited in 1809.*

fellowship hall addition, was built. For over a century, that building served as the home for the Mendon Presbyterian Church.

With the turn of the 21st century, the congregation once again had outgrown its home. A search for a suitable location for a new building led them to a 24 - acre site at the corner of Cheese Factory Rd. and Route 64. On a Sunday in the spring of 2005 the congregation gathered at the site, and with every person having pages of the Bible in hand, spread out across the acreage, and read aloud the entire Bible. Pastor David Smith said that they had "Bathed the land in God's Word." In August, 2006, the congregation moved into its handsome, new home which doubles the space afforded in the old church building. And last October, a picnic pavilion was constructed on the property. With the move to the new building came a change in the church's name, Mendon Church, to better reflect the communi-

ty nature of the congregation. Two years ago the congregation sold the 1900 neo-Gothic building to an entrepreneur who created a commercial wedding chapel business at the facility.

The story of Mendon Church, and the story of the Town of Mendon, are intimately intertwined. The Town of Mendon was founded in 1813 and Mendon Church was created in 1816. The town and the church have grown together for nearly 200 years. In fact, Mendon Church is the oldest congregation in Mendon / Honeoye Falls. Over those centuries the congregation has called four different buildings "home." And each of those buildings continues to be a benefit to our community today. But a church is never the building; a church is always the people. After almost 200 years, Mendon Church still enhances the quality of life in our community by touching the lives of people for good and for God.

**BEER IS PROOF THAT GOD LOVES US  
AND WANTS US TO BE HAPPY**

- Ben Franklin



With over 50 different custom brews you'll definitely find beers worth smiling about

- Tour our brewery and browse our gift shop
- Sample what's on tap
- Take home some really great beer!

Custom BrewCrafters 300 Village Square  
Honeoye Falls, NY (585) 624-4386



[www.custombrewcrafters.com](http://www.custombrewcrafters.com)

## Honeoye Falls Family Eyecare

201 W. Main St., Honeoye Falls  
*(across from the grocery store)*

Optometrist  
Linn D. Goetz, O.D.  
is welcoming  
new patients.



*Complete family eyecare,  
extraordinary eyewear!*

Including Maui Jim and  
Rudy Project Sunglasses.

Call 582-6255 for an appointment.  
We participate in most major insurances including VSP.

**Honeoye Falls**  
Family Eyecare

[www.visionsource-hffeyecare.com](http://www.visionsource-hffeyecare.com)



design • create • maintain



**STONEWOOD  
AND WATERS**  
LANDSCAPE CRAFTSMEN

*Crafting Landscapes Since 1992*

*Artistic Solutions for your  
Outdoor Environment*

p 585.533.1510  
f 585.533.6455

[www.stonewoodandwaters.com](http://www.stonewoodandwaters.com)

1346 Pittsford Mendon Rd.  
Mendon, NY 14506

# Trail News

## Digging Mendon's Bluebells




**AM&M**  
FINANCIAL SERVICES  
*A Tompkins Financial Company*

AM&M Financial Services, Inc. is a fully integrated firm offering personalized planning, wealth management, insurance and tax services for both individuals and businesses.

Our experts work collaboratively in teams and with other advisors to ensure that your entire financial picture is designed to meet your specific needs.

**FRANCIS M. CELONA,**  
CPA, CFP®  
VICE PRESIDENT, DIRECTOR OF  
BUSINESS OWNER SERVICES  
FCELONA@AMMFINANCIAL.COM



179 SULLY'S TRAIL, SUITE 200  
PITTSFORD, NY 14534  
WWW.AMMFINANCIAL.COM  
(585) 248-0050  
(800) 444-6640

SECURITIES OFFERED THROUGH ENSEMBLE FINANCIAL SERVICES, INC.,  
MEMBER FINRA, SIPC 179 SULLY'S TRAIL, SUITE 202  
PITTSFORD, NY 14534 4599 (585) 41 91 01 0

Last year the Mendon Foundation encouraged the greening of our area by carefully transplanting one of America's favorite flowers – *Mertensia virginica* – the bluebell. This year we continued the idea by planting even more bluebells along the trail head in the hamlet of Mendon.

The bluebell is one of the earliest and easiest to grow among wildflowers. Peak bloom of these bell-shaped blue beauties usually coincides with Mother's Day. The pastel blue flowers slowly turn a subtle shade of pink as they mature.

We are fortunate in Mendon to have several notable bluebell woods – areas of dense carpeting covered by bluebells. Brice Bowerman, whose family homestead includes a bluebell woods, has generously shared these plants with members of the foundation.

Brice says that the plant, which grows from a bulb, seems to prefer growing conditions that are shady and damp. If you believe in the greening of America, we encourage you to "go bluebell."



# & Views



*Flower children. Becca (third from right in the green shirt) and friends are helping to beautify the trail by planting hardy wildflowers.*

## Wildflowers, Wildflowers Everywhere!

This spring Rebecca Terry, Honeoye Falls-Lima High School Junior decided for her Gold Award Project to develop a beautification plan to plant wildflowers along the Lehigh Valley Trail with the assistance of Arlene Cluff, Director as the project advisor. Becca is a Girl Scout with the Totiakton Service Unit, Troop 376. She organized and developed a plan to weed and prepare a designated area along the Trail next to the ball fields; purchase and plant wildflower seeds and maintain the area. Becca recruited fellow Girl Scouts, friends and parents to complete the work. Beautiful wildflowers are growing today at the site. Becca's intention is to pass this plan along to another Scout so the project may be an ongoing beautification plan. Our thanks also to David Lawlor who donated money for the seeds.

**Many thanks to the following people who assisted Becca in preparing the area and planting the wildflower garden:** Becca's parents, Irene & Don Terry, Katie Lyon, Taylor Washington, Kira, Kip Webster and their Dad, Will Middleton, Cara Farrell, Lauren Jaenece, Erin Carroll, Sarah Hutchinson, Maureen Carroll, Sean Corey. Be sure to visit the wildflower bed and congratulate Becca on a job well done.

# PATHWAYS

is the newsletter of the Mendon Foundation, a completely volunteer organization which exists with the generous support of its members, volunteers, and contributors. This newsletter is published three times a year and paid for through the generous support of our advertisers.

**The Mendon Foundation**  
P.O. Box 231  
Mendon, N.Y. 14506-0231

[www.MendonFoundation.com](http://www.MendonFoundation.com)

### Board of Directors:

Carl Foss, President: 624-1634

Chris Carosa 624-1758	Terry Gossard 624-8059
Arlene Cluff 624-3182	Steve Richards 943-9920
Dick Dehm 218-9966	Blaine Grindle 624-8199
John Farrell 624-5914	Warren Wallace 624-5754

### Advertising Sales:

Bill Thaney 381-2080

### OUR VISION STATEMENT

We believe in preservation.  
We believe in recreation.  
We believe in education.  
We believe in community stewardship.

### OUR PURPOSE

To improve the quality of life in our community.

As we succeed in these objectives, we enhance property values for all Mendon property owners. The Foundation is supported by membership fees, grants and other contributions. Donations to the Mendon Foundation are tax deductible. Proceeds are used to cover easement acquisitions, monitoring and communications. All labor is volunteer.

### MEMBERSHIP FORM

#### Sign me up!

- Senior/Student \$20
- Individual \$25
- Family \$40
- Business \$50
- Sponsor \$100
- Sustainer \$250
- Patron \$500
- Benefactor \$1000

Name \_\_\_\_\_

Address \_\_\_\_\_

City, State, Zip \_\_\_\_\_

Day/Evening Phone \_\_\_\_\_

email \_\_\_\_\_

Please make checks payable to:

**The Mendon Foundation, P.O. Box 231, Mendon, N.Y. 14506-0231**

#### I want to volunteer.

##### My interests are:

- Lehigh Valley Trail
- Mendon Station Park
- Community Playground
- Mendon Hamlet
- Fundraising
- Communications
- Open Space/Preservation



# Inside:

MENDON STATION FESTIVAL  
SCHEDULE OF EVENTS • THE  
CHURCHES OF MENDON •  
MENDON'S OLDEST HOUSE  
2010 BIRDWALKS • DIGGING  
MENDON'S BLUEBELLS •  
STUDENT ARTSHOW WINNERS  
AND MORE!

ECRWSS  
Postal Customer  
Honeoye Falls, NY 14472



*You are among friends at Pinehurst.* Whether it's a card game in the lounge or an outing at the park, you can always find someone to enjoy the afternoon with. Sunny, easy-to-live-in apartments look out on the surrounding countryside.

Sit back and treasure a life of peaceful, calm living. Move into Pinehurst and discover why country living soothes the soul.

1000 Pine Trail, Honeoye Falls, NY 14472  
(585) 624-5970 • [www.pinehurstseniorliving.com](http://www.pinehurstseniorliving.com)

  
**PINEHURST**  
A SENIOR LIVING COMMUNITY  
*Where Acts of Kindness Happen Daily*