

PATHWAYS

Vol. 10, No.2

THE NEWSLETTER OF THE MENDON FOUNDATION

AUTUMN 2002

A member of the National Land Trust Alliance

www.MendonFoundationInc.org

Homeowners Leave Property to Mendon Foundation

Property owners on Cheese Factory Rd. in Mendon, have informed the Mendon Foundation that they have executed a last will and testament designating the Mendon Foundation as legal recipients of their home, outbuildings and surrounding land.

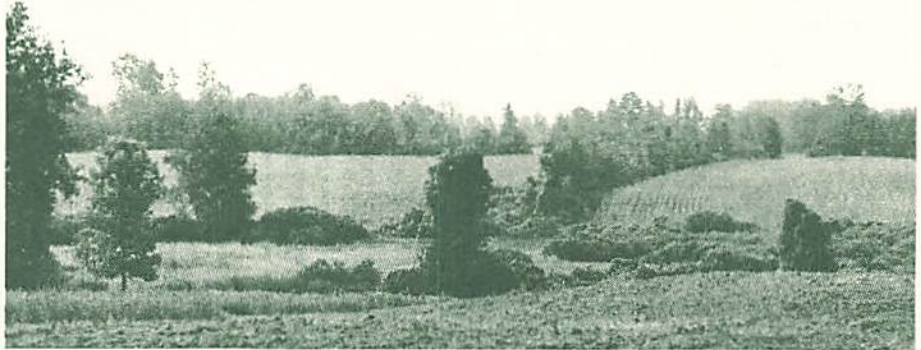
The owners asked not to be named to retain their privacy. However, they did offer to the Foundation Board the reason for this legacy:

"We purchased this property many years ago as one part of our long-range financial retirement plan. [This property] has not only given us joy in living here, but the appreciation on our investment that we'd hoped for.

"More important, our initial attraction to the area was the charm of the rural environment and open space that allowed us to keep the animals we breed and enjoy in our retirement.

"Over the years, we have watched with sadness, open land lost to development that uses the land profitably, but not wisely. It is our hope that other property owners in the area will follow our example for love of the open land while there is still some to bequeath.

"Retired folks like us have been led to believe that we are obliged to give our children or relatives all that we possess as a matter of inheritance, though we have already given them life, education and the ability to be independent, good citizens. We believe we have a larger obligation to the community that has nurtured us with good jobs, good friends, and a wonderful place to live that could easily be lost to future generation if we do not preserve the land with care."



The Mendon Foundation maintains stewardship of over 135 acres of open space in our community.

Mendon Arts Festival: Sept. 21 - 22

Building on last year's "Mendon Days," and under the direction of committee chairperson Diane Butler, the Mendon Business Assn., Mendon Foundation and 40 local businesses have joined together to sponsor a greatly expanded, community wide, *Mendon Arts Festival*.

The *Festival* will be held on Saturday, September 21st and Sunday, September 22nd.

Throughout the Hamlet, there will be artists and artisans selling their wares; pony rides, zoo mobile, balloon rides for the kids; and musical & dance entertainment and vintage car show for the entire family. The local restaurants will provide a variety of delicious food.

Proceeds from the Festival will benefit Hamlet beautification and the development of the Mendon Station Park on the Lehigh Valley Trail. Many of the activities and displays will be located in the park, including the entertainment stage. All the performers appearing on the stage are donating performances to help make the Mendon Station Park a reality.

Be sure to check the special *Mendon Arts Festival* section of this newsletter for the time and location of your favorite activities and events. (pages 4-5).

PATHWAYS

is the newsletter of the Mendon Foundation, a completely volunteer

organization which exists with the generous support of its members, volunteers and contributors. This newsletter is published three times each year and paid through advertisers.

The Mendon Foundation, P.O. Box 231
Mendon, N.Y. 14506-0231

Website: www.MendonFoundationInc.org

Board of Directors:

Carl Foss - President: 624-1634

John Buck: 624-5525 Chris Carosa: 624-1758
Arleen Cluff: 624-3182 Eileen Dobroski: 624-2139
Dick Dehm: 624-4466 Dr. Brian Eder: 624-2568
Wayne Gilman: 624-5773 Larry Hillbrandt: 624-2445
Ellen Smith: 582-3211 Warren Wallace: 624-5754

★MENDON FOUNDATION MISSION STATEMENT★

The Mendon Foundation is a non-profit corporation established to:

PRESERVE, protect and enhance the scenic, natural, recreational and structural resources in the town of Mendon and directly adjacent properties.

MAINTAIN a responsible stewardship of assets and properties held or controlled by the corporation.

ESTABLISH and promote local environmental education on issues pertinent to the preservation of natural resources in the town of Mendon.

As we succeed in these objectives, we enhance property values for all Mendon property owners. The Foundation is supported by membership fees, grants and other contributions. Donations to the Mendon Foundation are tax deductible.

Proceeds are used to cover easement acquisitions, monitoring and communications. All labor is volunteer.

The Mendon Foundation Membership Form

- I would like to become a member
- I would like to volunteer on / my interests are in:
 - Lehigh Valley Trail Committee
 - Trail Park Committee
 - Mendon Community Park Playground Committee
 - Mendon Hamlet Committee
 - Fund raising
 - Marketing Committee (advertising for newsletter)
 - Open space/preservation

Name _____

Address _____

City, St, Zip _____

Day & Evening Phone _____

Email _____

- \$25 Annual Membership \$50 Business Membership
- Please make checks payable to:

The Mendon Foundation P.O. Box 231, Mendon, N.Y. 14506
Phone: 585-234-8730

Volunteers Needed

With so many Festival activities going on over two days, there is a real need for additional volunteers. If you can help out, for two hours or more, on either or both days, please contact Warren Wallace at 624-5754 or via email at: warrfoote@aol.com.

Speaking of Volunteers...

Fran Celona is a partner in Salmin, Celon, Wehrle & Flaherty, LLP, Certified Professional Accountants. He has generously volunteered his assistance to the Mendon Foundation over the years as an outside auditor. As a not-for-profit corporation, we comply each year with New York State and Federal IRS audit requirements with the help of Fran. The Mendon Foundation is indeed grateful for Fran's guidance and oversight.



Fran Celona has generously helped the Mendon Foundation as an outside auditor.

Open Space, Conservation Easement Subcommittee Report

Update by Arlene Cluff

The Board of Directors of the Foundation would like your help in developing an Open Space and Conservation Easement Plan as part of our land trust commitment. Much work needs to be done in this area, which the Board cannot do alone. Anyone who is particularly interested in preserving the open space of Mendon or land acquisition is encouraged to join this subcommittee. Please contact Arlene Cluff at 624-3182 for further details.

Sibleyville Nature Reserve Report

Update by Larry Hillbrandt

Dave Hopkins and the neighborhood kids have planted and nurtured 1000 evergreen trees to be used for planting on the border between the Mendon Foundation's Sibleyville Nature Reserve and the neighbors.

A meeting will be scheduled in mid-September to discuss the Foundation's grant application for the reserve, hunting for the 2002-2003 season, membership in the Mendon Foundation and any other topics that need to be discussed.

Mendon Foundation Launches Website, Phone Number

The Mendon Foundation's website is now available at: www.MendonFoundationInc.org. Through the website

you can access the previous Mendon Foundation newsletters, view photos of the Foundation's land donations and nature reserves, learn about the warm weather grass program and how you can help reestablish the local pheasant habitat, and events that the Foundation is participating in or sponsoring.

The Foundation also now has a phone number where you can leave messages for Foundation Board members. That number is: 234-8730.

Playground News

Update by Rayno Niemi

In June, the swing sets at the park were upgraded with the assistance of Crawford, the new handyman at St. Catherine's Church. New chains and brackets were installed on all of the swings and two new strap seats were purchased and installed.

Based on new playground safety guidelines, the number of swings per segment was reduced from three to two, and the bucket swings and strap swings were installed on separate segments of the swings.

Each year a portion of the wood on the playground needs to be cleaned and sealed. I am looking for volunteers to work on the following two workdays:

Tuesday, Oct. 8th – clean the wood with power washers

Saturday, Oct. 12th – sand and seal the wood

Each work will begin at 9:00 AM. On the first date, I would like to have 3 or 4 people to work. On the second date, I would like to have 5 or 6 people, but more will make the workday shorter.

Renting a gasoline power washer costs about \$60 per day. If you have a power washer that you could loan us for the day, please contact me. If you are willing to help, please contact Rayno Niemi at 383-4342 (evenings) or via email at rdn@it.rit.edu.

Editorial Viewpoint

Making the Natural Connection

By Rand Wentworth

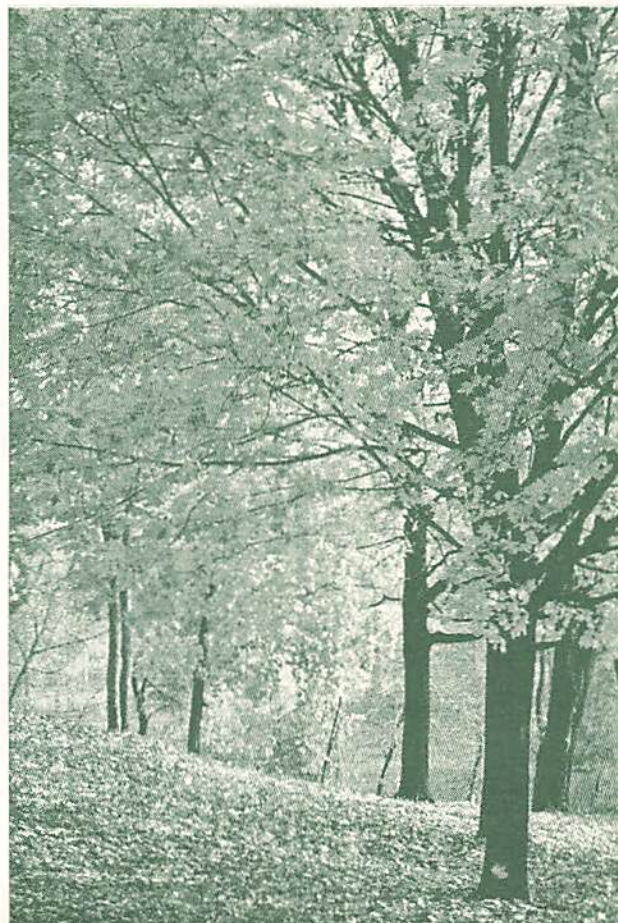
President, Land Trust Alliance

Consider: A study of post-surgical cancer patients found that those who became involved in nature-based activities - like walking and gardening - experienced faster improvement in their ability to concentrate and showed significantly greater gains on "quality of life" ratings.

Consider: Adolescents who have psychological problems are frequently referred to group wilderness therapy and find healing in the presence of nature.

Consider: A recent study of nursing homes found a 60 percent decrease in behavioral incidents when frail residents were allowed to get into nature by doing some gardening.

What we guessed intuitively is now being proven by scientific research - that connecting with nature changes



Help the Mendon Foundation preserve scenes like the one above by supporting efforts to obtain land donations and create nature reserves for our future generations

our lives and our attitudes. There's just one problem: Each day in America, we lose more than 8 square miles of natural lands. At that rate, we are losing 2 million acres of wilderness, farms and natural areas each year. And, in the process, we are also losing our best chance to find some peace in our busy lives.

Many people assume that sprawl is inevitable and that nothing can be done about it. But the million people who are active in America's 1,263 nonprofit local land trusts – like the Mendon Foundation – are doing plenty. They have already permanently protected more than 6.2 million acres - an area about twice the size of Connecticut - of parks, trails, farms, and natural areas.

The results are obvious in communities across the country, like here in Mendon where the Mendon Foundation has helped preserve over 100 acres for the future of this community.

What can you do? Support the Mendon Foundation - with your energy, your enthusiasm, your dreams. Don't wait until that last spot of serenity becomes the latest development.

You can make a difference.



Mendon Arts Festival

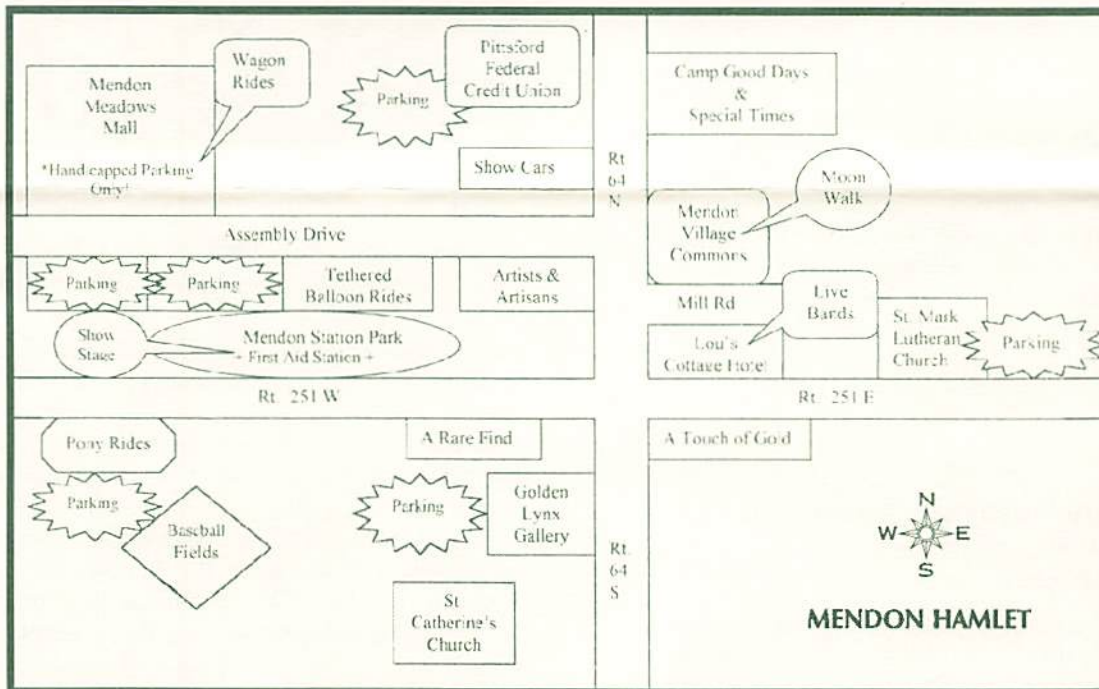
SATURDAY
SEPTEMBER 21
 10am - 6pm

SUNDAY
SEPTEMBER 22
 12pm - 5pm

Come visit the quaint Hamlet of Mendon and enjoy some good old country fun!

This exciting event will take place throughout the Hamlet and will offer fun and entertainment for the entire family. Join in the merriment with the artists and artisans, pony rides, musical and dance entertainment, wagon rides, vintage show cars, and demonstrations, along with a variety of delicious foods from our local restaurants.

The Arts Festival is a benefit for the beautification of the Mendon Hamlet and development of the Mendon Station Park.



Displays & Demonstrations

- Humane Society
- U of R's "Project Believe"
- Greyhound Adoptions
- Mendon Fire Department
- The Mendon Foundation
- Vintage Cars
- Hot Rods
- Zoo Mobile



The Festival Committee would like to call special attention to all the entertainers appearing on the Station Park Stage. They are generously donating their time and talent to help make this benefit a success.

The Dependents

- Eastman Jazz**
- Fiddlers of the Genesee**
- Ganondagon Young Spirit Dancers**
- Mendon Presbyterian Choir**
- Respect Jazz Ensemble**
- Young Irish Dancers**

MENDON ARTS FESTIVAL

SCHEDULE OF EVENTS & ACTIVITIES

Saturday, September 21, 2002

10am - 6pm	Artists & Artisans	Throughout the Hamlet
10am - 6 pm	Games of skill	Mendon Station Park
10am - till	Greyhound Adoption	Assembly Drive
10am - 5pm	Moon Walk	Mendon Village Commons
10am - 5pm	Vintage Car Display	RT. 64 N.
10am - 5pm	Hot Rod Display	Mendon Station Park
11am - 3pm	Pony Rides	Rt.251W (near Baseball Field)
11am - 3pm	Wagon Rides	Mendon Meadows Mall
12pm - 1pm	Respect Jazz Ensemble	Station Park Stage
12pm - 2pm	Zoo Mobile	Mendon Station Park
1pm - 2pm	Ganondagon Young Spirit Dancers	Station Park Stage
2pm - 6pm	Rhythm Brothers Band	Lou's Cottage Hotel
2pm - 3pm	Fiddlers of the Genesee	Station Park Stage
3pm - 4pm	Mendon Presbyterian Choir	Station Park Stage
4pm - 5pm	Fiddlers of the Genesee	Station Park Stage
4pm - 6pm	Tethered Balloon Rides	Assembly Drive

Sunday, September 22, 2002

12pm - 5pm	Artists & Artisans	Throughout the Hamlet
12pm - 5pm	Games of Skill	Mendon Station Park
12pm - 4pm	Moon Walk	Mendon Village Commons
12pm - 4pm	Vintage Car Display	RT. 64 N.
12pm - 4pm	Hot Rod Display	Mendon Station Park
12pm - 2pm	Zoo Mobile	Mill Rd.
1pm - 2pm	Eastman Jazz	Station Park Stage
1pm - 3pm	Pony Rides	RT.251W (near Baseball Field)
1pm - 3pm	Wagon Rides	Mendon Meadows Mall
1pm - 5pm	Gold Rush Band	Lou's Cottage Hotel
2pm - 3pm	Young Irish Dancers	Station Park Stage
2pm - till	Jack Russell Terrier Races	Mendon Station Park
3pm - 4pm	The Dependents	Station Park Stage
4pm - 5pm	The Dependents	Station Park Stage

(Events and Activities are subject to change and may be canceled if sever weather occurs.)

THE SOUND CONCEPT

Upstate New York's Leading Audio/Video Retailer Since 1983

Stereo, Video, Surround Sound, Home Theater,
Multi-Room & Home Automation Systems
Great Selection of A/V Furniture
Flatscreen, Plasma, Rear Projection TVs



Acurus • Aegis • AQ
Aragon • Atlantis • Boltz
Chang • Dream Vision
Gallo • Grado • JM Labs
Kimber Kable • Loewe
Magnepan • Mark Levinson
Martin-Logan • NAD
Newcastle • pARTicular
Proceed • PSB • REL
Revel • Russound
Salamander • Sennheiser
Sumiko • Theta • Thiel
Toshiba • VTL • YBA

2314 Monroe Ave.
(between Winton & Clover/590)

442-6050

Monday-Thursday 11am-8pm
Friday 11am-7pm
Saturday 10am-5pm

THE SOUND CONCEPT

www.thesoundconcept.com

Mendon's Money Manager!

*Celebrating 5 Years of
"Conservative Long Term Growth"*



Christopher Carosa
CTFA President

Serving Private and Corporate
Investors, IRA Rollovers, IRAs,
401k Plans, SEPs and
Other Retirement Plans

Now conveniently located
in the heart of the Hamlet
at

1370 Pittsford-Mendon Road

Right on the Trail!

Call us at 624-3150

to set up an appointment
to discover how you can best benefit
from our services.

CAROSA,
STANTON
& DEPAOLA
Asset Management, LLC

*The Next Generation In
Investment Management*

BRIDGES of Mendon

A UNIQUE RESIDENCE FOR SENIORS



When a nursing home may not be the right choice...

We've created a unique residence where personalized senior care and attention, group activities, individual time, privacy and togetherness all work together to form a civilized whole. Bridges residences are gracious country inns, with less than 10 residents. Each home is staffed by health care professionals 24 hours a day.

Please call to arrange a visit.

585-624-2233 www.bridgesbyclassen.com

1851 - 2001

Celebrating 150 Years of Building Lasting Relationships!

At Wyoming County Bank we'll give you the
time and attention you need for your financial decisions
and all the latest conveniences when you're out of time.

*It's the way banking should be,
and it's what you should expect.*

166 West Main Street / Honeoye Falls / 624-5940



Wyoming County Bank

A Member of Financial Institutions, Inc.

Attica / Danville / Genesee / Honeoye Falls / Lakesville / Mt. Morris / North Java
North Warsaw / Strykersville / Warsaw (Main Office) / Williamsville / Wyoming / Yorkshire



EQUAL HOUSING LENDER

1-800-836-2265 / www.wycobank.com

MEMBER FDIC

House Content Bed & Breakfast

Quaint English cottage
in the heart of Mendon



388 Mendon Center Rd.
(Near intersection of Rt. 251)

Call 624-7887
for reservations

CHAMBERLAIN D'AMANDA OPPENHEIMER & GREENFIELD

ATTORNEYS AND COUNSELORS AT LAW

Honeoye Falls Resident

Sheldon W. Boyce

A hometown lawyer,
backed by the resources of
a downtown firm.

Serving Mendon residents in the tradition
begun by Philetus Chamberlain in 1879.

1600 Crossroads Building • Two State Street • Rochester, NY 14614-1397
716-232-3730 • FAX 716-232-3882

Orthodontics for Children and Adults

*A lifetime of
beautiful smiles*

- Latest in orthodontic technology:
mini metal, clear ceramic and
invisible!
- Flexible payment plans
- Free initial consultation

TIMOTHY J. DAMON, DDS

Specialist in Orthodontics

6 Norton St., Honeoye Falls • 624-4260
2220 S. Clinton at Westfall Rd. • 442-1260



Your pets will receive loving
care in the safety and
comfort of their
home...

JOANNE'S

COMPANION
PET CARE

American Red Cross
Certified
Pet First Aid



Serving Honeoye Falls Area Exclusively
(716) 582-2063



Where Acts of Kindness Happen Daily.



"I am grateful to the Pinehurst staff who read me the weekly newsletter and list of activities. As I am visually impaired, this kindness has enhanced my independence and my life."

— Josephine Green, Pinehurst Resident

One and Two bedroom apartments

- Short walk to the quaint Village of Honeoye Falls
- Serving seniors for over a decade
- 24 hour staffing
- Fine dining cuisine
- On-site health care service available
- Professional, dedicated staff

Call now for a free get acquainted tour.

(585) 624-5970

Non-Profit Org.
U.S. Postage
PAID
Rochester, NY
Permit No. 721



Mendon Foundation Inc.
P.O. Box 231
Mendon, N.Y. 14506-0231