

The Lehigh Valley Railroad, Part One - Rochester Junction

by *Mary Hamilton-Dann*

In 1892, history was made at an unlikely spot a short distance north of the Village of Honeoye Falls.

The Lehigh Valley Railroad — a double track mainline between Buffalo and Geneva — chose the area for a major checkpoint on the Buffalo Division of its interstate network.

Having purchased 21 acres of land around Plains Road in the Town of Mendon, the managers originally intended to build a freight yard. But fortunately for nearby farm families, the plan never materialized. Instead, a combination passenger/freight station was erected, a Victorian-style wooden building with peaks and gables which was approached from Plains Road by a pair of canopied platforms.

With the completion of a single-track branchline to Rochester, the tentative name 'Honeoye Junction' was changed to 'Rochester Junction'. Because of the large volume of traffic on the Rochester Branch, a separate

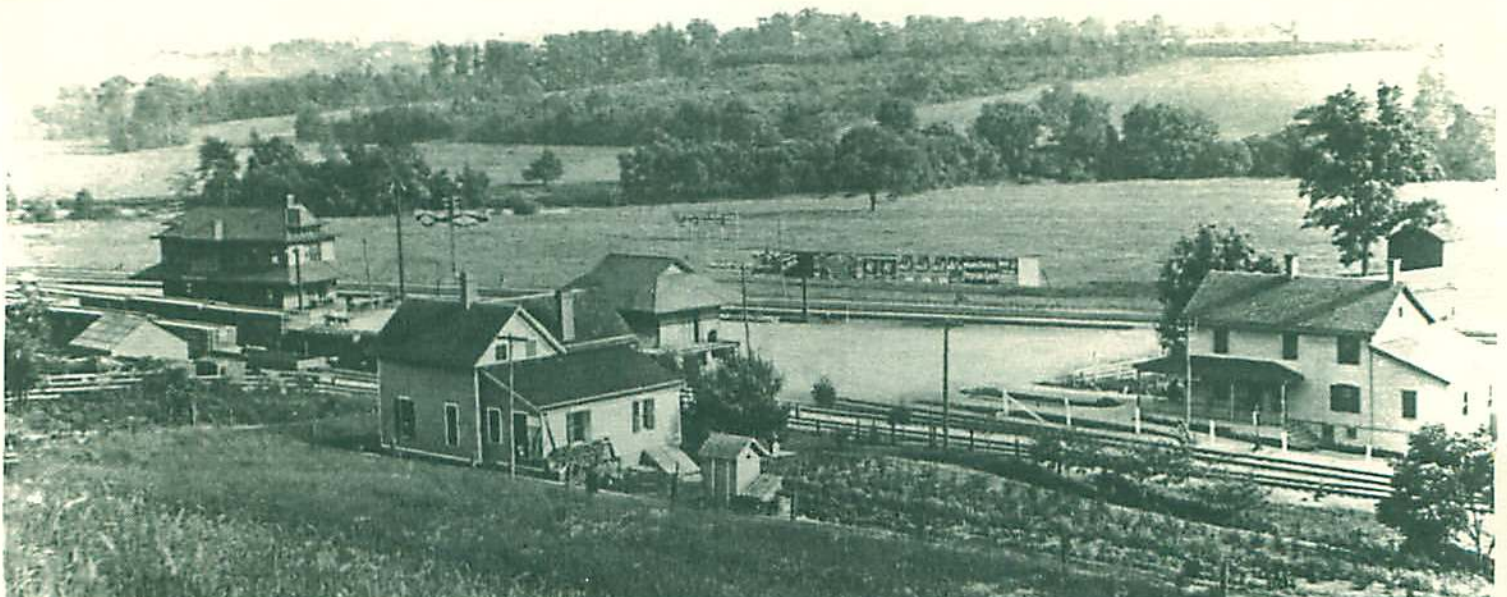
building was located a short distance west of the main station. This structure remained for a time after the main depot burned on Easter Sunday 1973.

A newly-built Junction Road connected Plains Road with Stoney Lonesome which exited at Clover Street. The mainline tracks crossed Clover at grade level.

Several hundred yards west of the depot, Honeoye Creek wandered across a field. Although it was a minuscule stream at that point, the railroad was obliged to build a heavy-duty bridge in order to accommodate the weight and speed of its trains. This triple track span provided a siding which reached to and beyond the depot.

The Junction was a beehive of activity. When a single-track line was built south to Hemlock Lake, freight and passenger traffic converged on the depot from all directions. This in turn gave rise to a small com-

(cont'd on page 2)



Rochester Junction – Far right is Lehigh Hotel, far left is Junction Depot.

Photo courtesy of Christopher and Julie Sochin

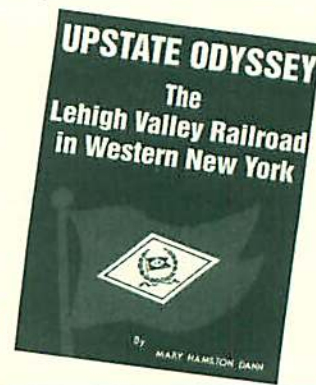
munity which included both a hotel and a school, the latter serving as a church on Sundays. That same hotel remains today as a private residence located immediately opposite the station site on Plains Road.

Although the Lehigh's principal business was shipping anthracite coal from the mines of eastern Pennsylvania, it also provided passenger service on a grand scale. The famous Black Diamond Express was a regular 'visitor' at the Junction. Listed in time tables as Train No.10 Eastbound and No.9 Westbound, stops between Geneva and Buffalo were generally limited to the major stations of Batavia, Caledonia, Rochester Junction, Manchester and Clifton Springs. Thus, one boarding the Express at the Junction 11:47 a.m. reached Geneva at 12:25 p.m. — a record 78 minutes!

In 1892 when the Lehigh built through Rochester Junction, a few railroad operations were automated. Others depended upon visual/manual control.

From an interlocking tower a few hundred feet east of the Junction station, an operator directed traffic on the mainline, sidings and branch lines. Since both freight and passenger trains used the same tracks, the exact times of arrival and departure — determined through telegraph or telephone communication from station to station and otherwise by observation — were carefully monitored by the agent on duty at the tower; he also controlled the switches. (The New York Central RR eliminated a measure of this problem by four-tracking, a costly modification.)

Train-watching at the Junction was a favorite pastime for local folk. From miles around they came by horse and buggy, and later by auto, to observe the Express and whatever else was transpiring there. Any



Read More About It!

Order a copy of Mary Dann's book

Only \$30

Available from
The Mendon
Foundation
Just Call 624-9370

untoward event occurring down the line, such as the infamous train wreck at Manchester in August 1911, was discussed at length for weeks to follow.

Each community touched by the Lehigh had its own story to tell, and recollections by the villagers of Rush and Mendon were no less colorful than those from other stations along the line.

A primary source for information on the Lehigh's activity in the area was the Honeoye Falls TIMES whose reporters chronicled these events with commendable accuracy and frequency. From this, it is evident that the railroad was a major element in the lives of local people. Heretofore dependent upon horse and buggy, they now had ready transport to distant places — and horse-and-wagon farmers a convenient way for their output to reach near and far-away markets. Not least was a dependable supply of hard coal for heating.

In short, the Lehigh Valley Railroad transformed many isolated villages of rural New York State to an inter-community network. Among the primary beneficiaries were those of Livingston, Monroe and Ontario Counties. ■

*Lehigh Tracks in the early
1970's – Looking West past
Rochester Junction*

Photo courtesy of Anne Bullock

Crimson King Maple Planted in Honor of Harold Stanford

by Nancy Allinger

The late Harold Stanford was rooted firmly in the village of Honeoye Falls. Together with his wife, Louise, Harold raised his children there. While doing so, he gave much to the local community. Louise remembers, "Back in the 1960's he helped organize the Totiakton Rifle Club for Juniors and a baseball league for boys." He also loved to garden, filling the Stanford yard with a variety of flowers.

When Harold passed away recently, Louise chose to remember him by purchasing a crimson king maple tree in his honor through the Mendon Foundation. The tree has been planted at the entrance to the Lehigh Valley Access Park near the Little League baseball fields in the Town of Mendon. "Harold would be pleased to have a tree planted in his name in the park near the ballfields," says Louise. Thanks to her generous gift, Harold's memory will now be firmly rooted in the community he so loved.

Louise Stanford purchased the tree through the Mendon Foundation's Plant Sale. Through the sale, interested parties can donate plants for the access park.

With the aid of Pittsford Tree and Landscape, the Mendon Foundation has developed a landscaping plan for the access park. To complete the plan, numerous shrubs, trees and bushes need to be planted. Through the Plant Sale, area residents have made contributions to the Mendon Foundation for the purchase of a specific plant. A plaque will be placed near each plant noting the name in which the plant was purchased.

Planted near the entrance, the crimson king maple welcomes residents to the park and beckons them further to the trail. As its trunk thickens and its branches spread out, it will provide shade in the hot summers and serve as a beautiful landmark year round. It will make a lasting contribution to our hometown, just like Harold Stanford did. ■

SEEKING INTERESTED PARTIES

The Mendon Foundation has two available positions on it's board of directors for active caring people.

Applicants should contact
CARL FOSS 385-2330



Perx
Card

Honeoye Falls Market Place
166 West Main St.
Honeoye Falls, NY 14472
Phone (716) 624-1560
Fax (716) 624-1534

Meals
To Go

Belissimo
Pizza & Pasta

New York
State Lottery

Open Sunday 7:30am - 9:30pm
Monday - Saturday 7:30am - 10:00pm



HONEOYE FALLS
MARKET PLACE



A Market of Uncompromised Quality in a Place Close to Home

We are a full service grocery store featuring:

- A comprehensive line of natural and organic foods and dietary supplements.
- The finest in gourmet cheese imported from regions throughout the world.
- European Pasty Chef Brigitte Reynders who will custom design your cake for any occasion.
- Water Boiled Bagels made fresh daily in our bakery.
- A wide selection of domestic and foreign imported beer.
- Service meat case featuring black angus beef, rock lobster tails, and jumbo shrimp.

President's Message (cont'd from page 5)

HAMLET

While implementation is still a ways off, we are proceeding with organization and planning for the section of the Lehigh Valley Trail that is in the center of the Hamlet. Neighbors have been contacted for opinions and ideas on how it can be best used. We are forming a committee to evaluate the ideas.

GLEASON CONTRACT

The Foundation has achieved contracts with Gleason Works and Corporate Holdings of America that will allow us to preserve 118 acres of land as open space. The entire parcel is 268 acres - 150 acres of which the development rights will be leased to CHA. This project is currently in the planning phases. All plans and development will be with the Town of Mendon and Village of Honeoye Falls approvals.

CHANGES IN THE FOUNDATION'S DIRECTORS

Two of our board members have retired this year, Susan Katz and Elaine Koral. Both worked tirelessly to help the Foundation grow and succeed. We will all miss their leadership yet look forward to their occasional volunteer help in the future.

In summary, this has been another banner year for The Mendon Foundation. We've had many accomplishments and look forward to facing the challenges of the coming year. Volunteer time and financial support from our neighbors in Mendon and Rush are the keys to continued success. We remain a very frugal organization fully utilizing any support offered to us to continue to achieve the objectives of our mission. ■

Mendon Foundation Annual Meeting

Scheduled for May 20, 1998

7:30 pm

Mendon Town Hall

*For your banking, trust, & investment needs,
call the hometown bank...*



First National Bank

You. First.®



*in Honeoye Falls at 624-3600, or stop by...
we're open Monday through Friday till 7:30 p.m.
& Saturdays 9:00 a.m. - 3:30 p.m.
at 28 North Main Street.*

New Members

The people and businesses listed below have supported us by becoming new members since our last issue.

Michael and Marilyn Arman
Robert and Marcia Armitage
Larry Bonk and Judie Weaver
John and Claire Carey
Laura J. Dustin
Douglas R. Gale
Michael and Rita Gow
Michael and Denise Graver
Emilie B. Manzler
Maryanna Mueller
Paul D. Schweinsberg
David and Sandra Smith
Peter and Kin Spina
Jim and Beverly Ward
Kevin and Trude Wright
Mary Hamilton Dann
The Hurlbut Foundation
Mendon Pediatrics: Dr. Charles Olin

We would like to add your name to our list of supporters. If you would like to join, renew, or make an additional cash contribution, please complete and mail in the form on page 8.

Your donation is tax deductible!

"... a global vision of health, environmental integrity, economic abundance, and incredible quality of life for everyone." (Cell Tech)



Duane Basch & Nancy Allinger
Independent Distributors
Cell Tech - Super Blue Green® Algae
(716) 624-2382

TROY-BILT
AUTHORIZED DEALER

TORO

Wheel Horse®
AUTHORIZED DEALER
STIHL®
AUTHORIZED DEALER

DAVE'S MOWER

- SALES AND SERVICES -
PARTS FOR MOST BRANDS OF POWER EQUIPMENT

BRIGGS/STRATTON • TECUMSEH • KOHLER

DAVID DEAN
(716) 624-3018

7288 Rush-Lima R. (Rt. 15A)
Honeoye Falls, NY 14472

Rare Opportunity

Convenient Picturesque Setting
Frontage on Irondequoit Creek

1.7 Acres

Hamlet of Mendon

Approved for new office building

Permitted uses include:

- retail
- personal services
- professional offices
- medical/dental clinics
- + special permitted uses

Gorsline Real Estate, Inc.

385-2330

SEEKING COMMON GROUND, INC.

1563 West Bloomfield Road

Mendon's own community supported organic farm



-fresh organic produce throughout
the growing season
-free workshops and seasonal festivals

to join call Yvonne Villareale at 473-9318

BOARD OF DIRECTORS

Carl Foss - President
624-1634

Nancy Allinger . 624-2382 Dick Dehm 624-4466

Eileen Dobroski 624-2139 Loretta Engler . . 624-9370

Wayne Gilman . 624-5773 Chad Engler . . . 624-9370

Bulk Rate
U.S. Postage
PAID
Mendon, NY
Permit No. 3

Mendon Foundation, Inc.
P.O. Box 231
Mendon, New York 14506-0231



MEMBERSHIP/ORDER FORM

YES, I am interested in The Mendon Foundation.

- I would like to become a member of the Foundation.
- I would like to be a volunteer for the Foundation.
- I would like to be a volunteer specifically for the Trail Project.
- I would like a Foundation member to contact me.

PAYMENT ENCLOSED

- \$25 Annual Membership
- \$50 Annual Business Membership
- Parking Lot Improvement Project \$ _____
To be used to buy _____
- Trail Signs \$ _____

Name _____

Address _____

Phone (Day) _____ (Night) _____

Please mail to: The Mendon Foundation, P.O. Box 231, Mendon, New York 14506-0231